



Herbcloud

The JCVAP Pockety

Herbcloud

Package Includes / P11

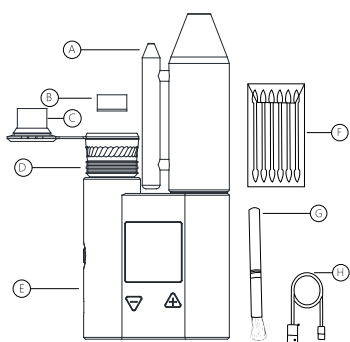
Quick Start / P12

Temperature Setting / P15

How to clean / P15

Herbcloud

Package Includes:



A:Glass Attachment

F:Dust Free Cotton Swab

B:Dosing Capsule

G:Hair Brush

C:Ballcap

H:USB-C Cable

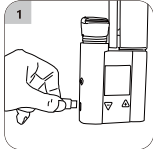
D:Heating Chamber

Carring Case(not shown)

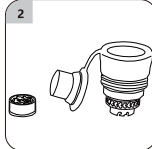
E:Battery Base

*Each glass piece is hand blown and may be different in size
**Charger is not be supplied and available on www.jcvap.com

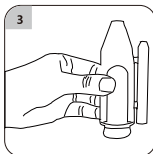
Quick Start



Fully charge the device before first use. The charging icon is full means fully charged.



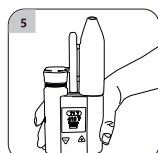
Open the ballcap, fill content to the dosing capsule, put it to the heating chamber, close the ballcap and assember the heating chamber to the battery base.



Fill glass with water just above the air-holes. Do not fill water while the glass attached to the device.



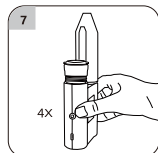
Align glass airflow hole on the front of the glass with chamber, push the glass to the base carefully.



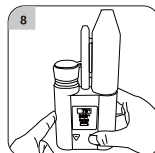
Open/Close the device, hold down the power button 2 seconds.



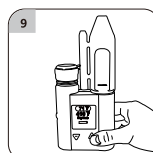
Adjust screen brightness, hold Power button down, then click '+' , '-' button to increase or decrease brightness



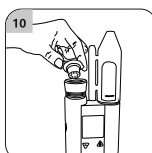
Switch mode, press the power button 4 times to switch between concentrate mode and dry herb mode.



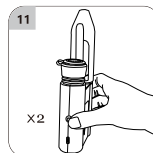
Switch temperature unit, click the '+' , '-' button at the same time.



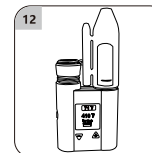
Heat setting, click '+' , '-' button to increase or decrease setting temperature.



Place carb cap on the top of chamber, press down until snug. Use the included chamber jacket & lether to keep it safe during use.



Initiate heat-up/exit, double click the power button. Pulsing light indicates heat-up mode is active. Screen will show real time temperature change.



Device will vibrate and light will flash twice when ready. Inhaling gently will produce the best results.

Temperature Setting

Default:348°F/175°C

Lowest:212°F/100°C

Highest:500°F/260°C

Cleaning Chamber

1.Remove the cap and unscrew the chamber from the base .

Do not handle if hot.

2.Unscrew the top chamber and Pick out the dry herb insert out. Use the Hair-brush to clean it . **(Do not clean under water)**

Cleaning Heater

Submerge the chamber in 90% + isopropyl alcohol for 20 minutes.Unscrew the top chamber and use a cotton swap to wipe it gently.

Cleaning Base

Preparation: remove glass and chamber.



Gently clean the gold contact points using cotton swabs soaked in isopropyl alcohol.

Clean the airpath between the chamber and the glass.

Do not allow water into the base at any time.

Cleaning Glass

Preparation:Carefully remove glass from base.



1.Once removed,Submerge in Isopropyl alcohol.

2.After soaking,remove from isopropyl alcohol and rinse clean with water. (Make sure it's rinsed thoroughly prior to use.)

Allow glass to thoroughly dry before re-attaching to base.

Do not re-insert glass onto base with water in the bottom chamber

GENERAL WARNINGS:

- Do not overfill the chamber.
- Do not blow or exhale hard into the glass.This will force water into the base.
- Do not store device with water in the glass.
- Strong inhales may cause spillage and damage to your chamber.
- Keep away from moisture and high humidity.
- During use the chamber is hot (Burn Hazard).



HELP/CONTACT US

Please do not return the device to us or make a charge back.Keep your proof of purchase.

If you're having anything less than a perfect experience, reach out to our support team.

1.Visit jcvap.com/livechat.

Initiate a live chat is the fastest way to contact with us. All business days we are online at working time.If we are offline due to time zone difference,please leave message and your email address.We will contact you at first time when we come back to work.

You can send your video/service with issue to our after-service email boxservice@jcvap.com,That may solve your problem quickly.



Use #JcvapPockety to share your experience.
Kindly follow us on Instagram!
@JCVAPTECH



by JCVAP Technology Co.,Ltd-All Rights Reserved